



Thank you for your TUKAANI design chopsticks purchase.

The TUKAANI are made in Finland here at KAYIWA Limited. The universal fineness mark for sterling silver [.925] and a registered responsibility mark are stamped on your TUKAANI as proof that this designer silverware is original.

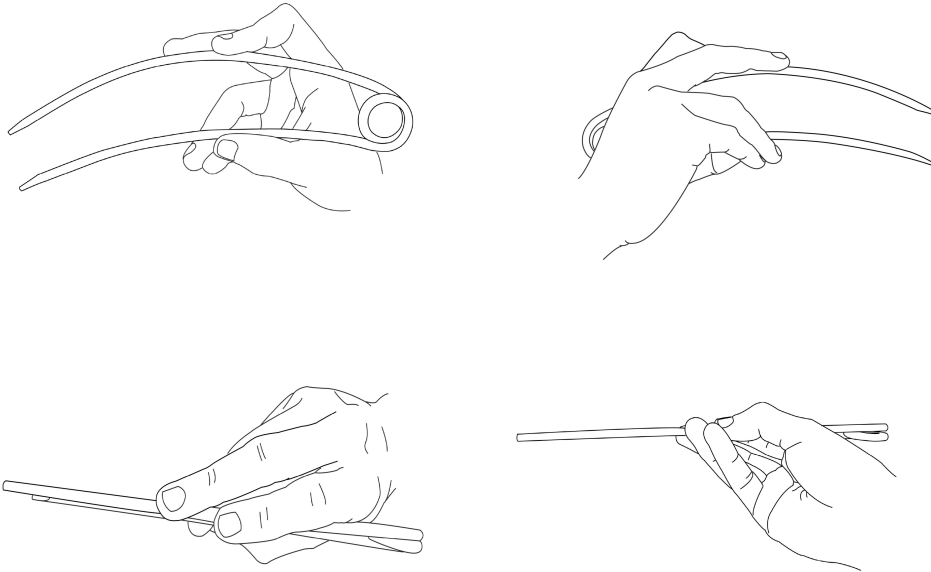
Attached are the TUKAANI user guide and the care instructions.

TUKAANI USER GUIDE

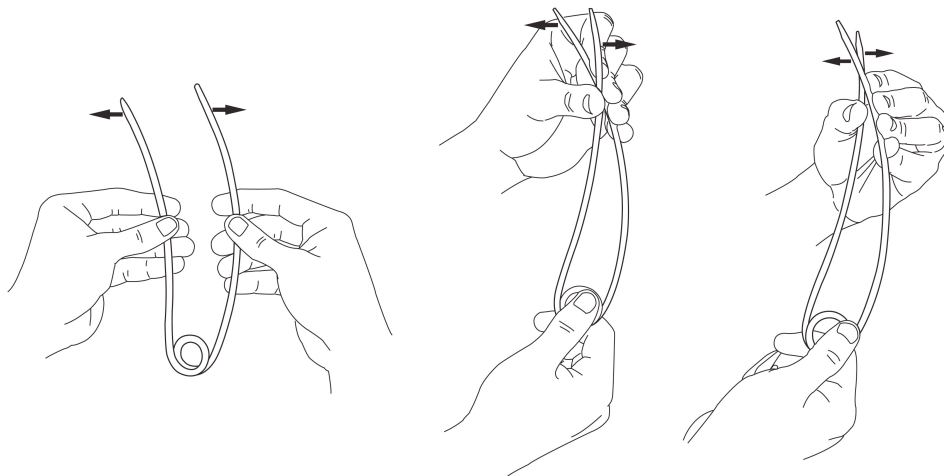
Usage

Please refer to the illustrations below.

- Place the TUKAANI between your thumb and index finger at the chopsticks' center.
- Place the middle finger with the index finger.
- Place both the ring and the little fingers with the thumb.
- Press and release.



The TUKAANI design chopsticks are also adjustable. Gently pull the chopsticks' arms outwards at their center until the tips of their arms are at a maximum of 8 centimeters apart. Carefully realign the arms to achieve the desired fit as shown below.



TUKAANI CARE INSTRUCTIONS

The maintenance of silverware is determined by the monetary or sentimental value you place on it. Abiding by these recommended guidelines will ensure that you fully enjoy your TUKAANI's worth.

Cleaning

We strongly recommend hand washing and drying:

- Place a dishtowel at the bottom of the sink to prevent contact between the silverware and the metallic sink.
- Wash with mild dish soap.
- Gently rub the tarnished area with a soft dish washing towel. Move around the silverware, inside and out, until the tarnish is gone.
- Rinse in lukewarm water.
- Dry with a clean linen towel to thoroughly remove all the moist.

Do not confuse a good patina for a bad tarnish. Rotate the use of all of your silverware to create an even patina throughout your set. In case of stubborn stains, seek professional help for your silverware.

Polishing

When rejuvenating the matte surface, we strongly recommend that you only polish your TUKAANI silverware when thoroughly clean and dry.

- Use a clean and dry kitchen scouring pad.
- Rub the silverware gently and evenly inside and out.
- When satisfied with the new matte polish, rinse in lukewarm water.
- Dry with a clean linen towel to thoroughly remove all the moist.

Storage

We strongly recommend that you wrap the silverware in a clean and dry cloth or store in a silver chest or do both.

Caution

- Do not leave food on silverware for more than an hour. Wash up as soon as possible.
- Rinse silverware as soon as possible if it were in contact with heavily acidic or alkaline foods such as eggs, fruits, tomatoes, olives, salt, mayonnaise, vinegar or lemon.
- Do not let silverware soak for a long period of time in water.
- Do not mix silverware with other dishes or cutlery in the same wash.
- Do not use instant dips, soda, toothpaste, detergents with phosphate additives or any type of scented dish washing soap.
- Do not wrap in plastic, newspaper, foil or bind with rubber bands.
- Don't allow prolonged contact with matches or anything that contains sulfur.
- Keep the silverware away from dampness and direct sunlight.
- Avoid placing silverware on hot surfaces such as heating elements or near open flames.